



Newcastle-under-Lyme College

Sixth Form Studies

A Level and AS Philosophy

What is the aim of the course?

Philosophy concerns itself with fundamental issues - the causes, nature and principles of existence - and with the related concepts and beliefs which have shaped social systems over the centuries. The aim of the course is to develop the knowledge, understanding and powers of reasoned argument which will enable you to critically examine a wide range of these concepts and draw your own conclusions, while working towards an Advanced Level qualification.

Are there any entry requirements?

Philosophy is normally studied as part of a full-time A Level programme for which the standard entry requirement is 32 GCSE points (the equivalent of 4 C and 2 D grades). This may not apply to Part-time students, for whom a keen interest in the subject is the most appropriate entry qualification.

How long does it last?

At A Level this is a 2-year course requiring 4.5 hours' attendance per week. The 3 modules of the AS course are completed in Year 1, to which in Year 2 you add 3 further modules for the full A Level. Philosophy combines well with other Humanities and Social Science subjects in a full-time programme. Part-time students can study the subject by joining the full-time sessions.

What will I learn?

Year 1 (AS)

Module 1: Theory of Knowledge. This examines the nature and extent of our knowledge and raises questions about beliefs, truth and doubt.

Module 2: Moral Philosophy. The module explores such issues as: what makes our actions right and wrong? When, if ever, is it permissible to kill? Do animals have rights?

Module 3: Philosophical Text: Descartes, Meditations. "I think, therefore I am". Descartes examines the relationship between mind and body, and the nature of doubt and certainty.

Year 2 (A Level)

Module 4: Philosophy of Mind. An investigation of such questions as: what is the mind? What is a brain? What is the relationship between mentality and physicality? Dualism v Materialism.

Module 5: Philosophical Text: Ayer, Language, Truth & Logic. Ayer discusses the function of Philosophy and the verification principle.

Module 6: Synoptic study. An in-depth essay bringing together your experience of all modules to demonstrate your knowledge and understanding.



INVESTOR IN PEOPLE

NEWCASTLE COLLEGE

Your College

How will I learn?

You learn through experiencing a varied range of lectures, class discussions, and group work. You will be encouraged to contribute, and will develop your ability to think critically and adaptably, and to present coherent arguments.

How will I be assessed?

You are assessed through 3-hour essay-based examination papers at the end of the course - one for AS, and two for A Level.

What will I gain?

Although Philosophy is directed more towards developing understanding and informed critical judgements about human life and society than towards a specific career path, it is an appropriate subject for entry to Higher Education where it is an important element of many degree courses. It is a valuable component of Humanities and Social Science studies at both Advanced and Degree level, as it develops a fuller appreciation of the arguments and principles underlying subjects such as Sociology, Psychology, Law, Government & Politics, Classics, English Literature and the natural sciences.

For further information please contact the Faculty of Sixth Form Studies

Thank you for your interest in this subject area. Newcastle College offers a complete range of educational opportunities for students of all ages, including traditional academic programmes of study and those directly related to present or future employment, together with a wide range of leisure-and-learning activities, and opportunities to develop essential skills. If you join a course, you will become part of a community of over 1800 full-time and 5000 part-time students: we are big enough to deliver your needs, but small enough to care!

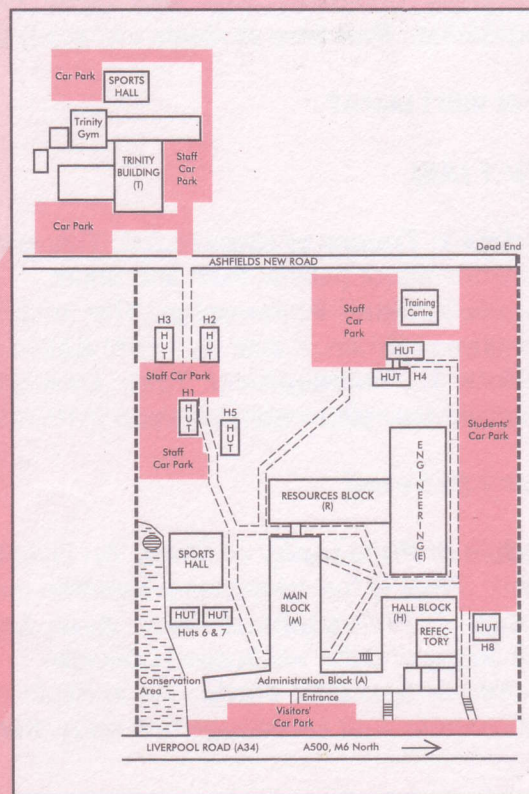
For further information please telephone 01782 715111 (voice & minicom) and ask to speak to the Sector Secretary who deals with the course/subject in which you are interested.



INVESTOR IN PEOPLE

The College has the objective of being an equal opportunities provider in terms of education, training and support, regardless of age, gender, ethnic origin or disability.

Newcastle College has achieved the **INVESTOR IN PEOPLE** national standard.



NEWCASTLE COLLEGE

Your College

HUMA 11c.doc

LIVERPOOL ROAD, NEWCASTLE-UNDER-LYME,
STAFFS ST5 2DF

TEL: 01782 715111 (voice & minicom) FAX: 01782 717396